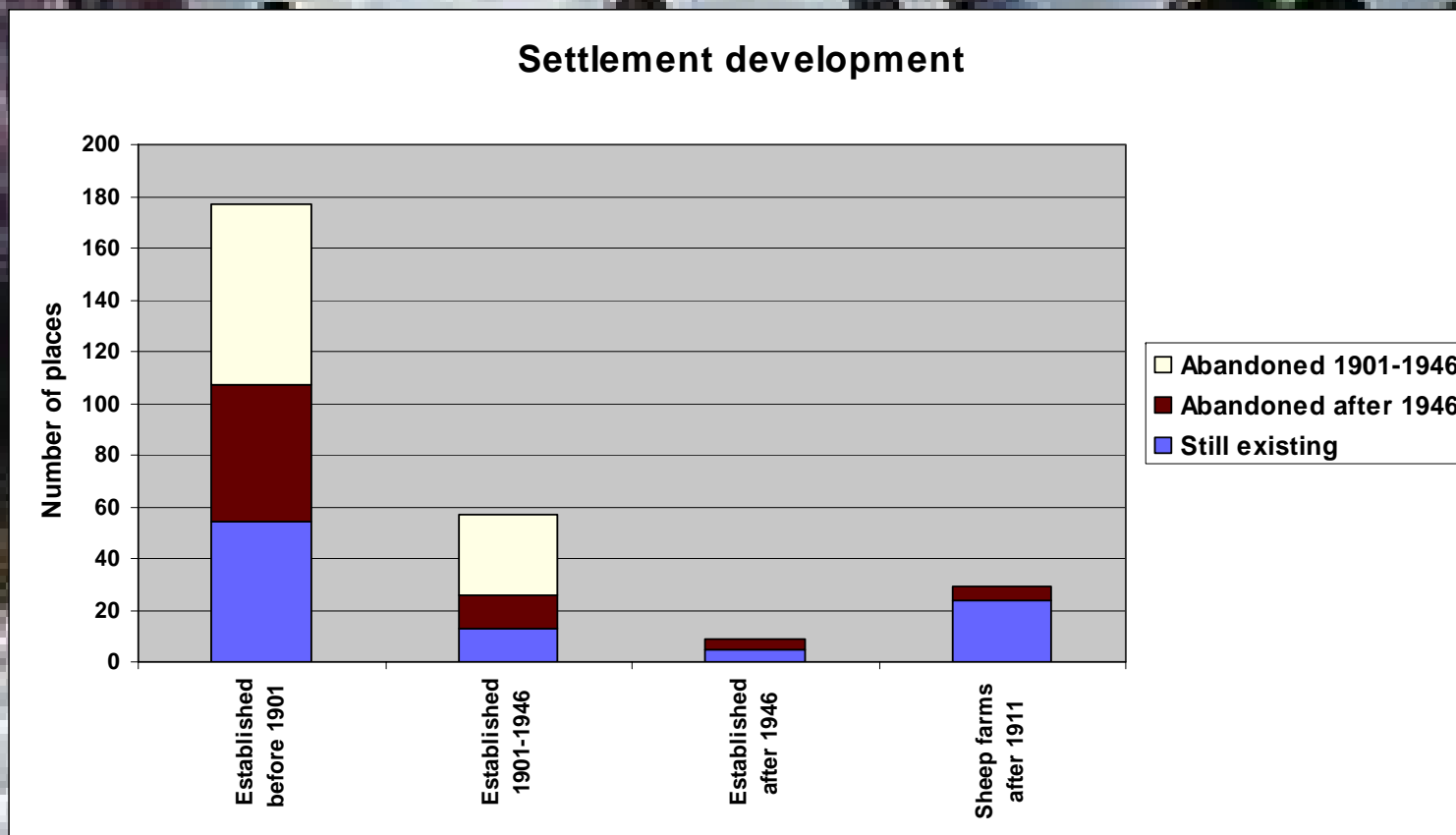




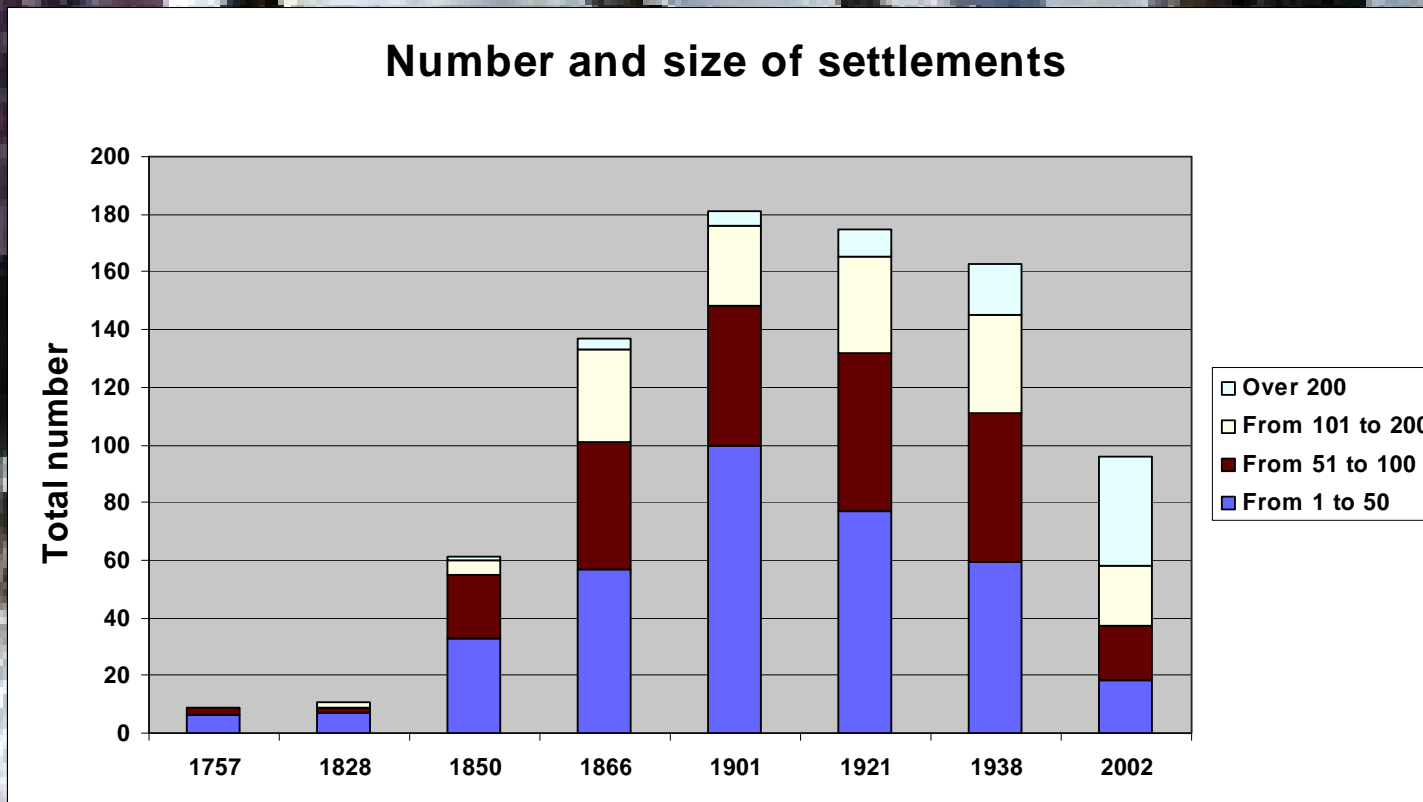
Analytical research approaches

Changes in settlement structure

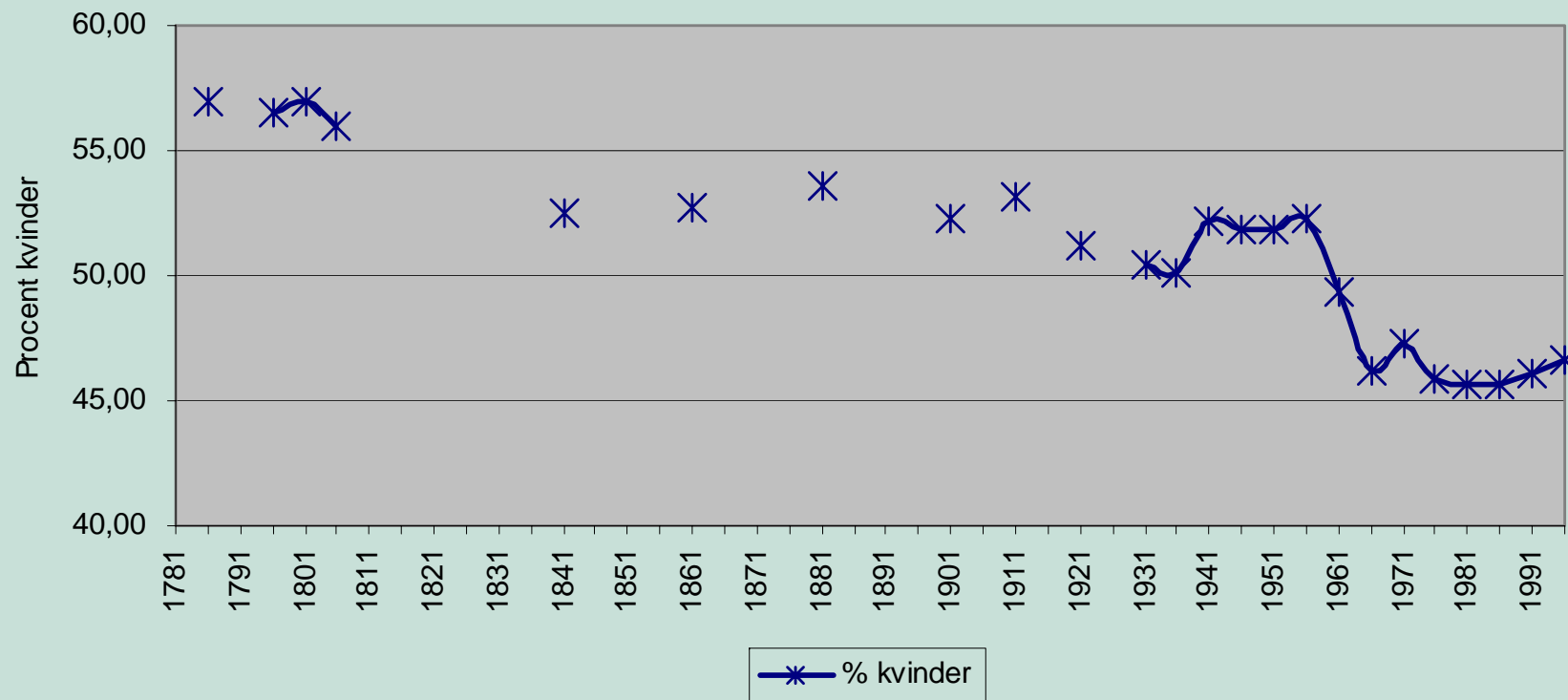


Changes in settlement structure

Number and size of settlements

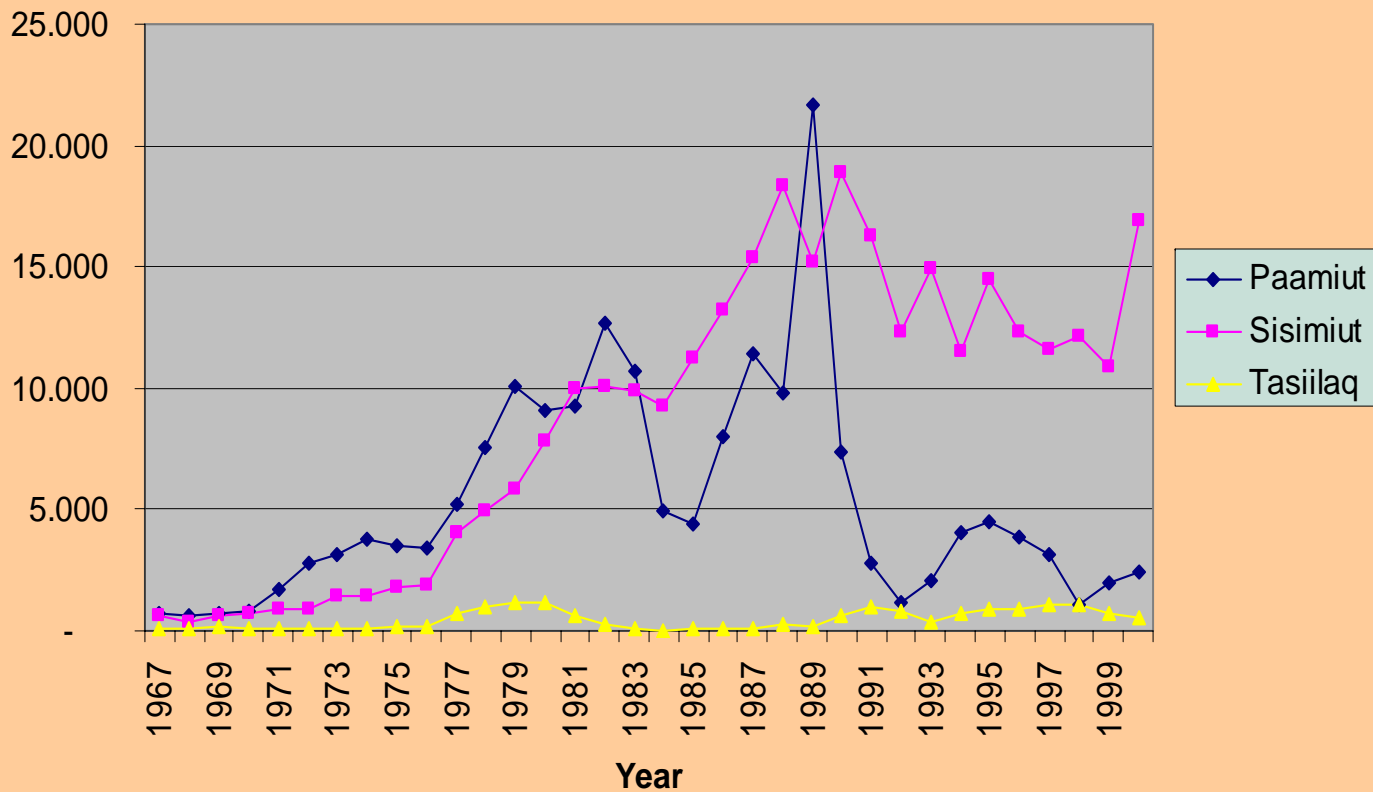


Gender distribution



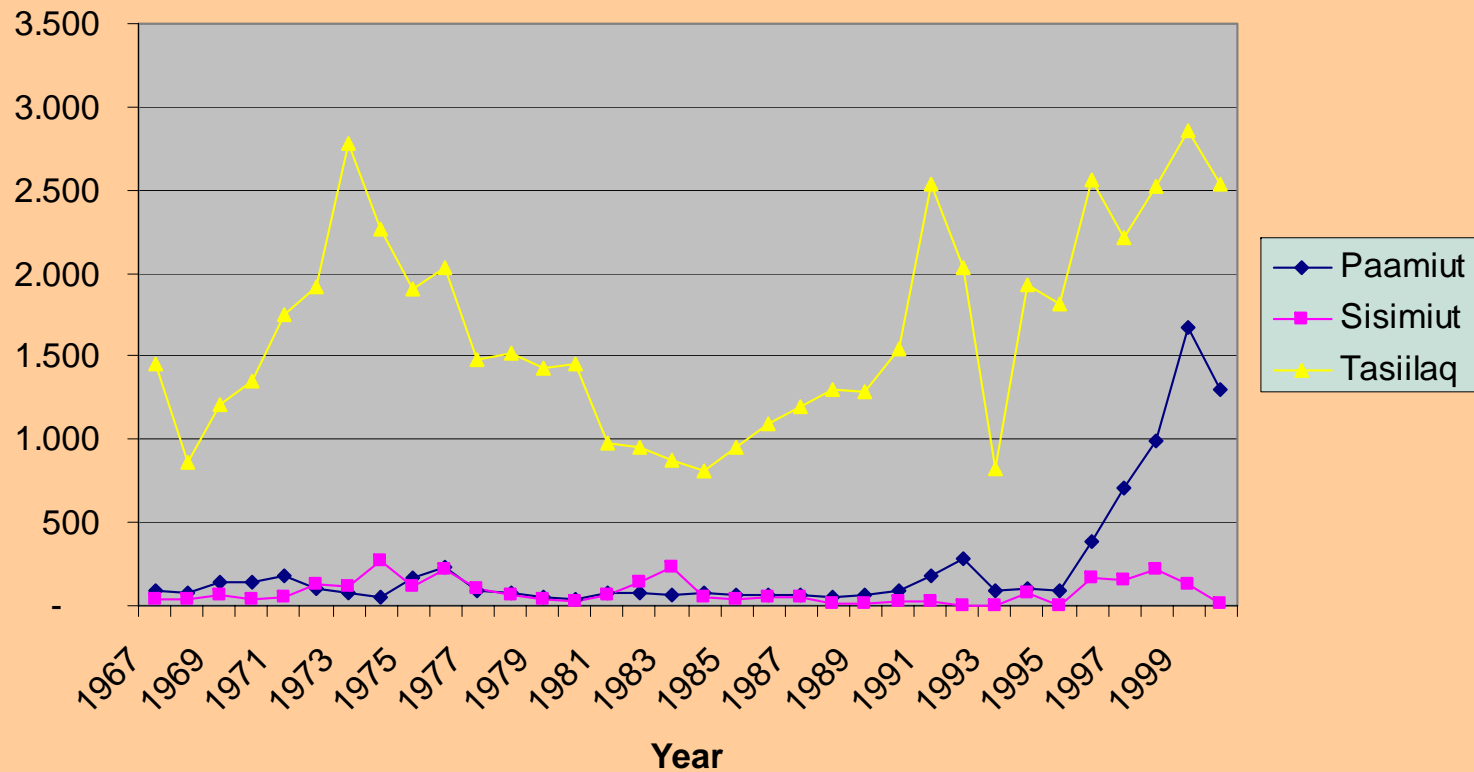
Economic activity

Per capita sale of fishing products (Fixed 2000 value)

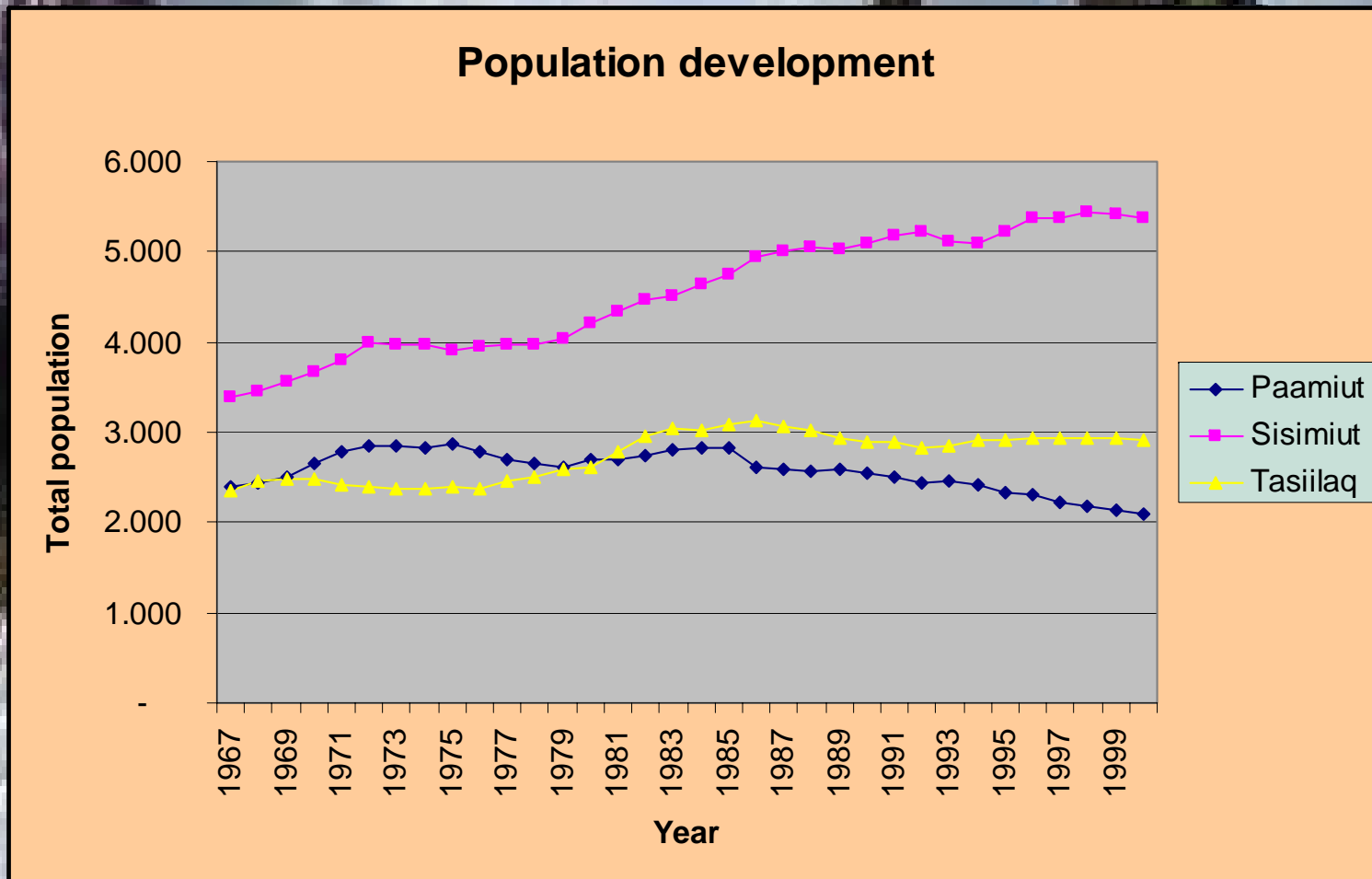


Economic activity

Per capita sale of hunting products (Fixed 2000 value)

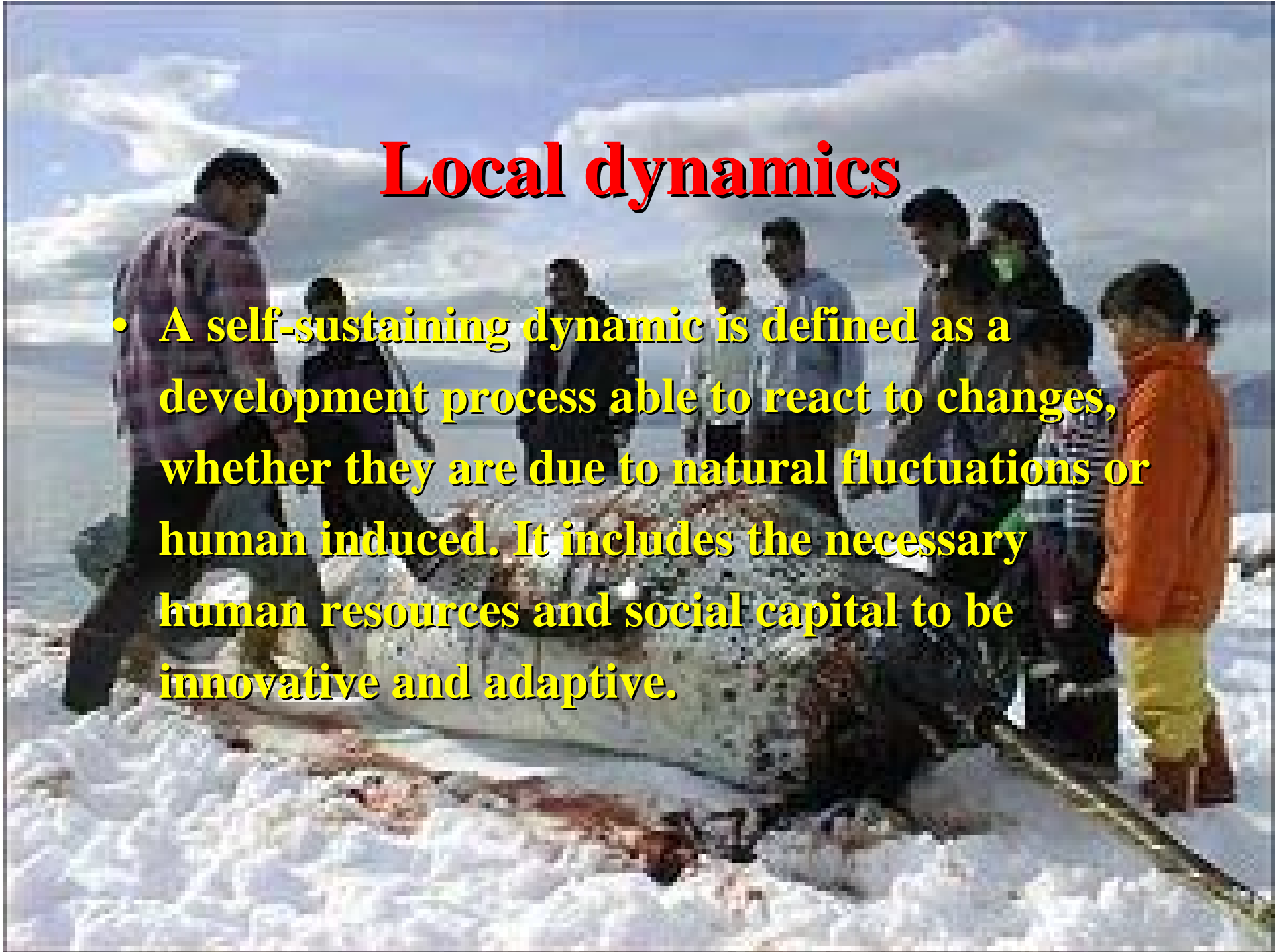


Population consequence



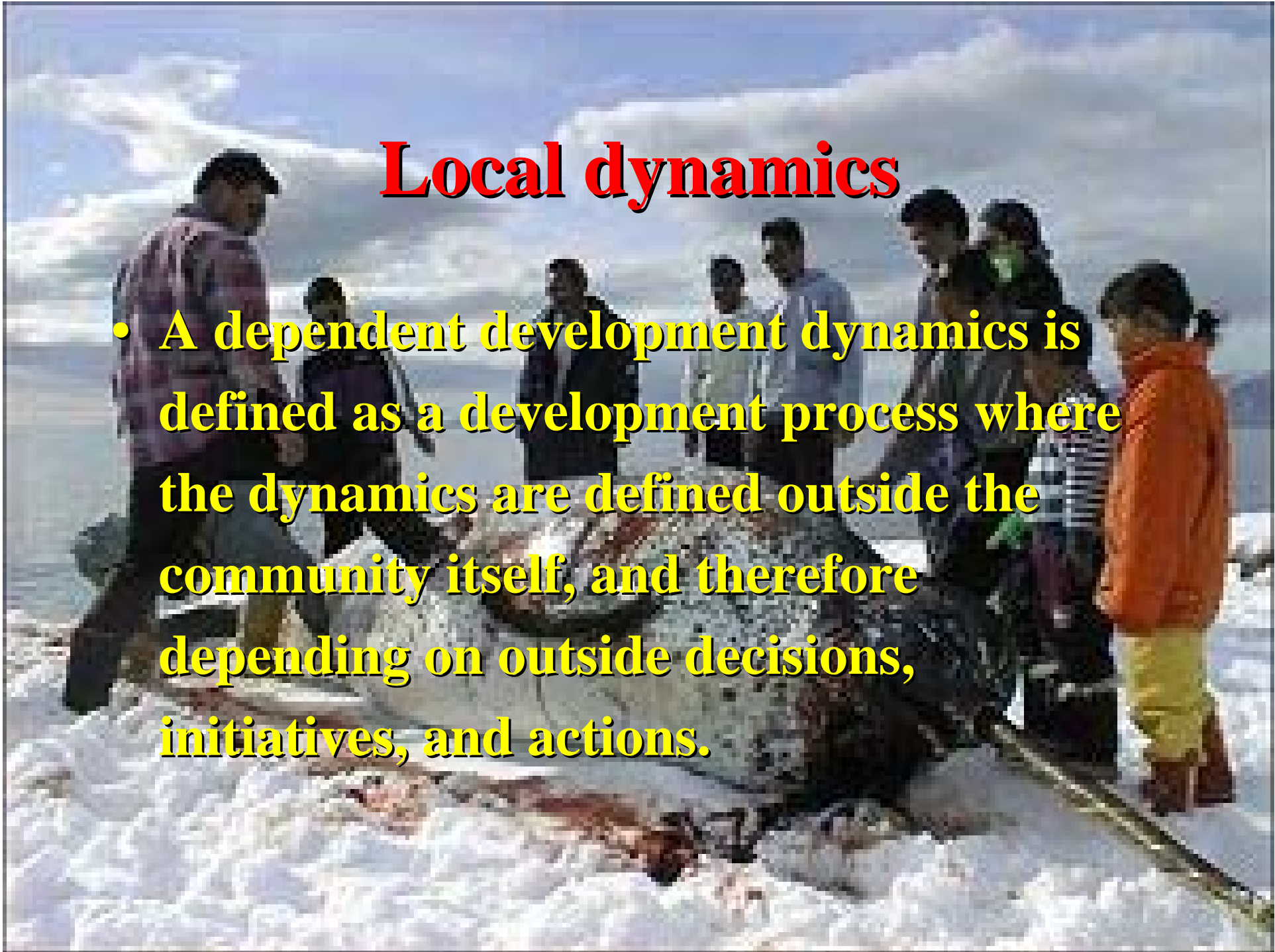
Local dynamics

- A self-sustaining dynamic is defined as a development process able to react to changes, whether they are due to natural fluctuations or human induced. It includes the necessary human resources and social capital to be innovative and adaptive.



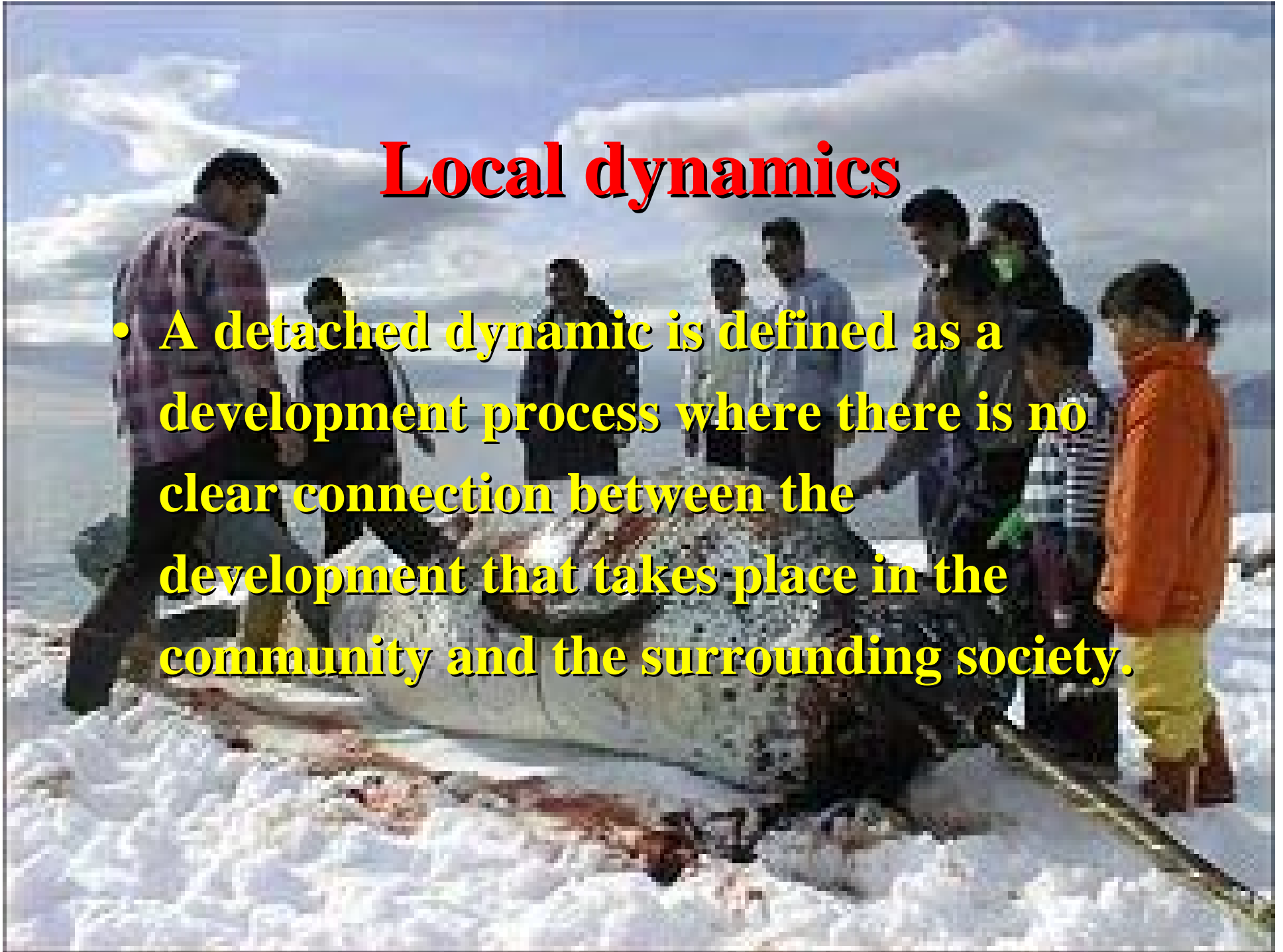
Local dynamics

- A dependent development dynamics is defined as a development process where the dynamics are defined outside the community itself, and therefore depending on outside decisions, initiatives, and actions.



Local dynamics

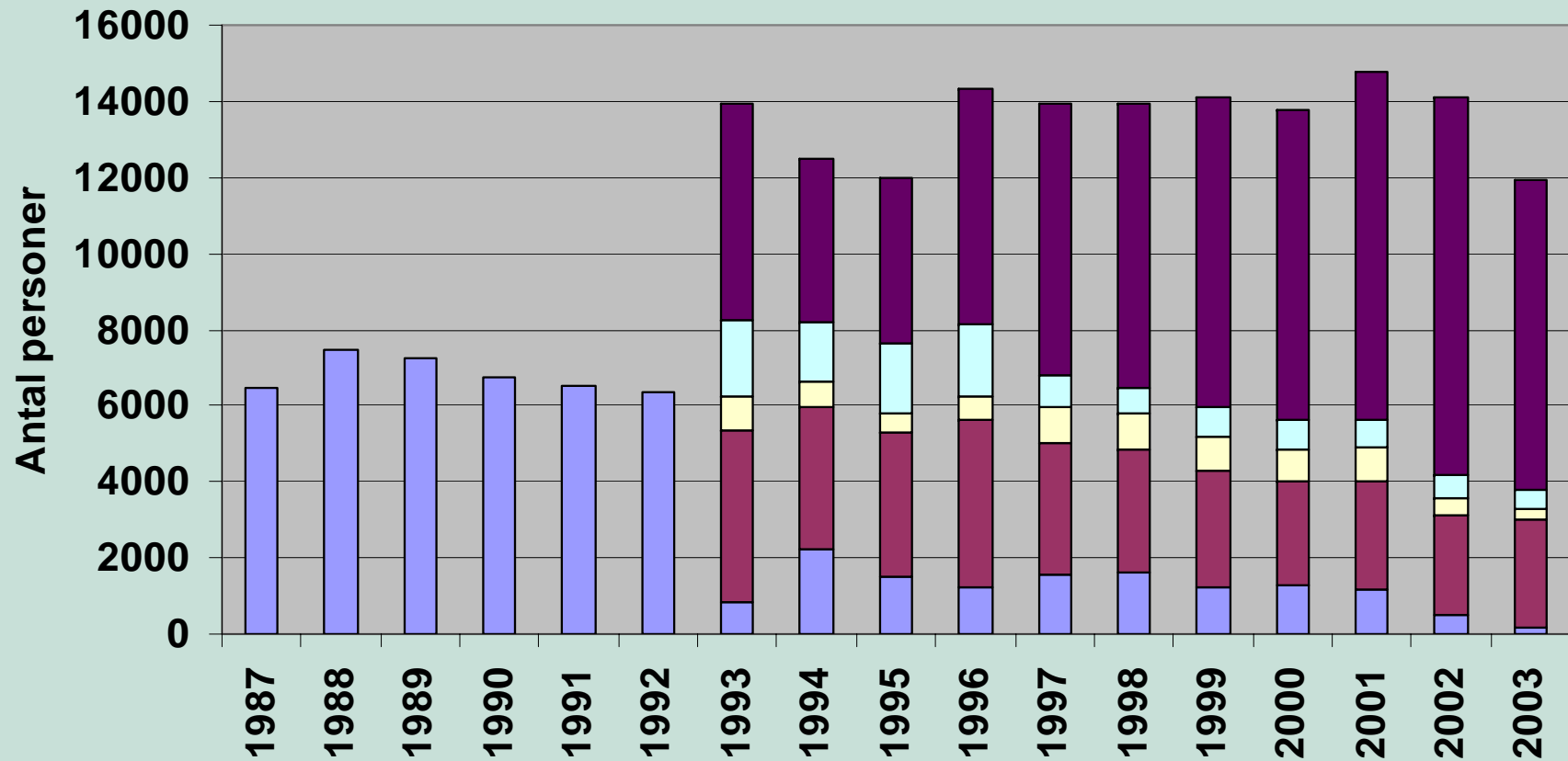
- A detached dynamic is defined as a development process where there is no clear connection between the development that takes place in the community and the surrounding society.



Socio-economic analysis

- **Register analysis**
 - Statistics Greenland
 - Home Rule Government
 - KANUKOKA
- **Questionnaire**
 - 576 (612) respondents out of 1969
 - 95%

Distribution



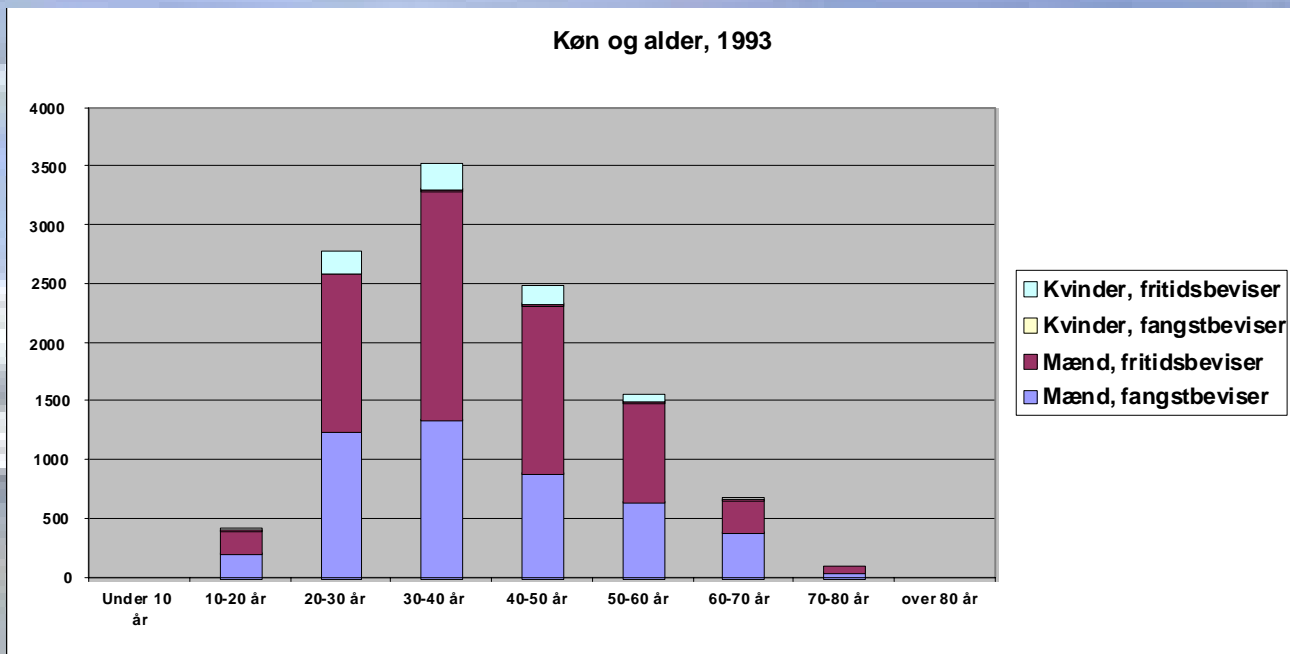
Indhandlere uden bevis

Fritidsbevisindehavere med indhandling

Fritidsbevisindehavere uden indhandling

Fangstbevisindehavere med indhandling

Fangstbevisindehavere uden indhandling

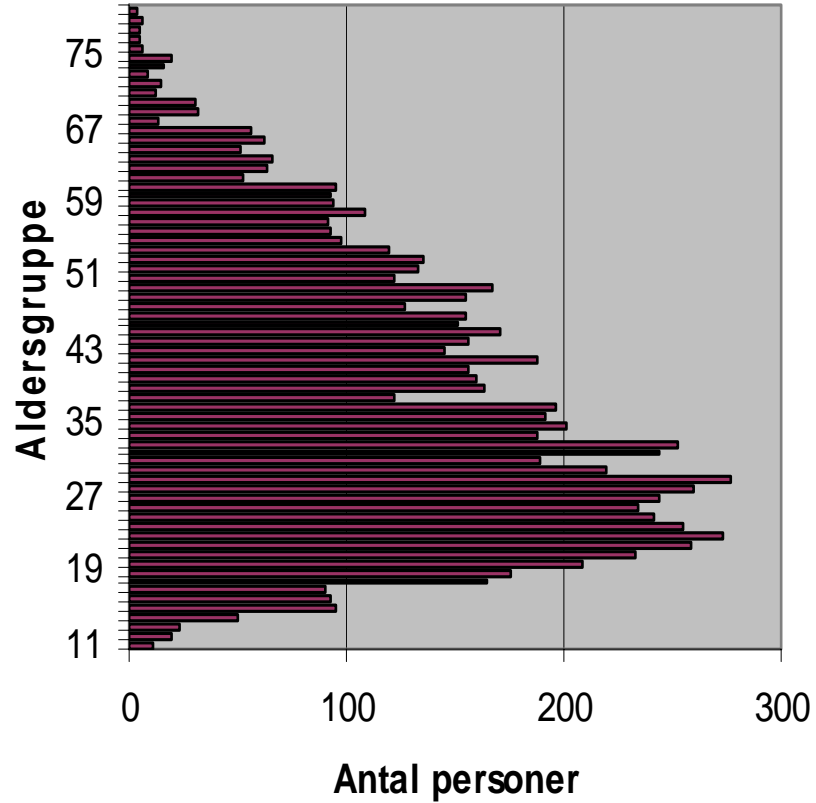


**Age
structur
e**

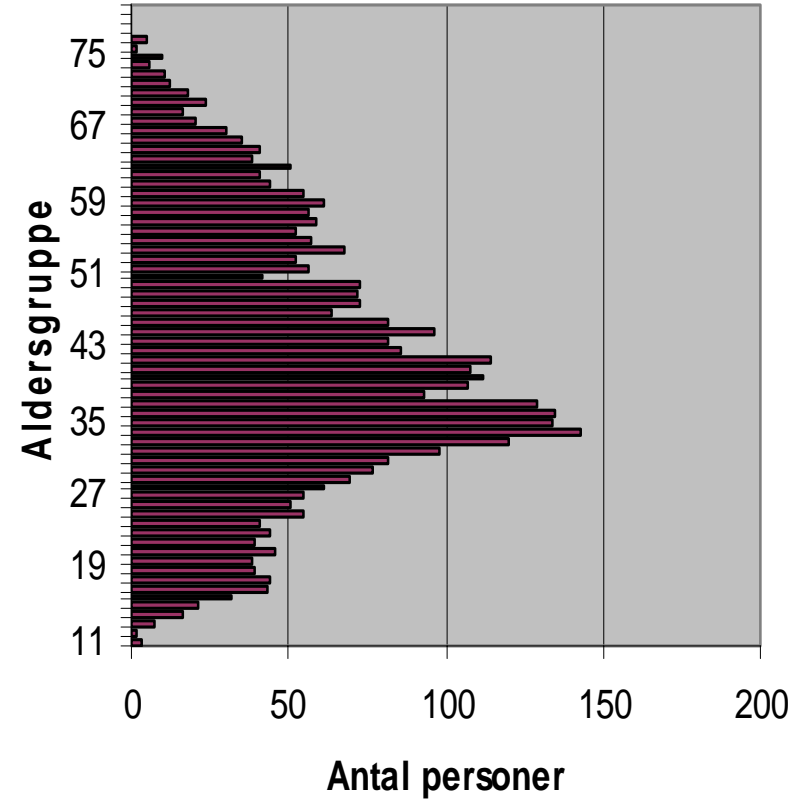


Generation shift?

Personer involveret 1987

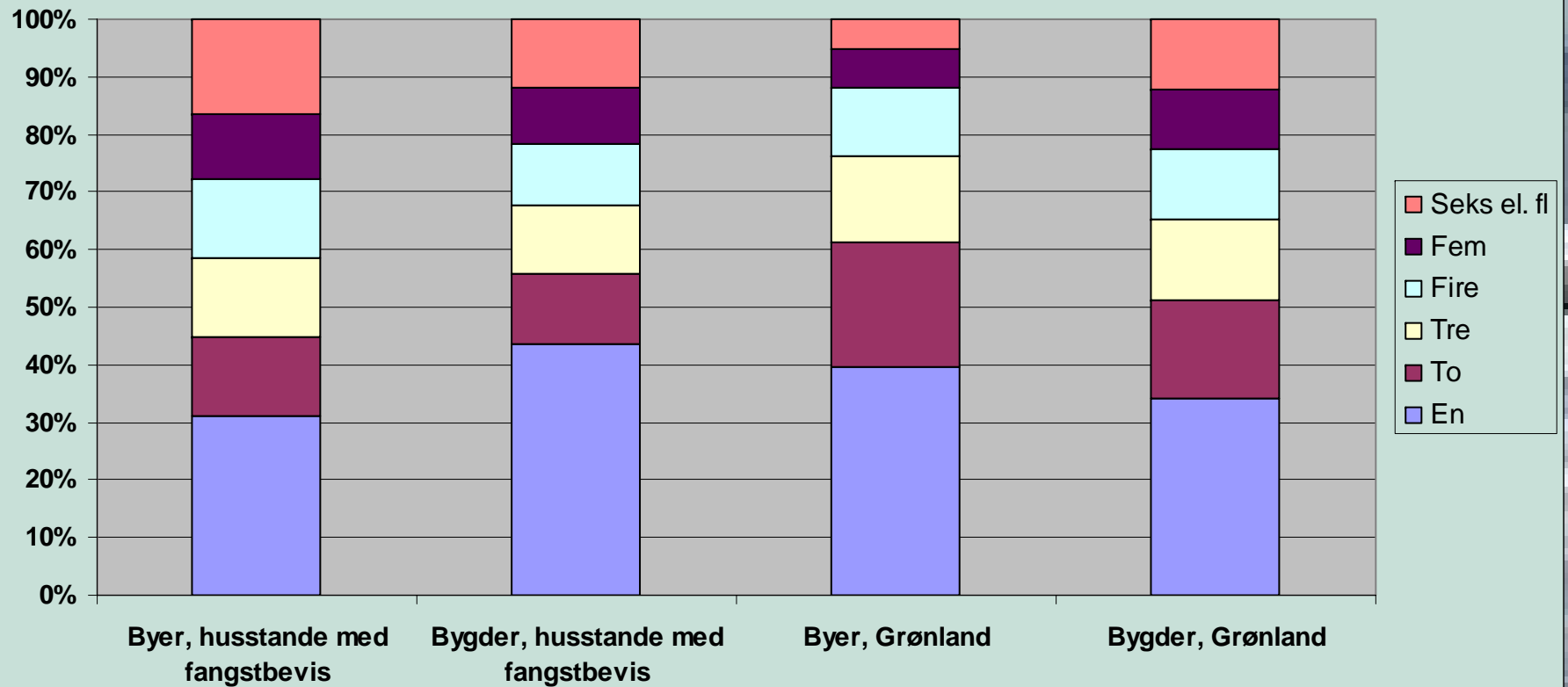


Personer involveret 2000



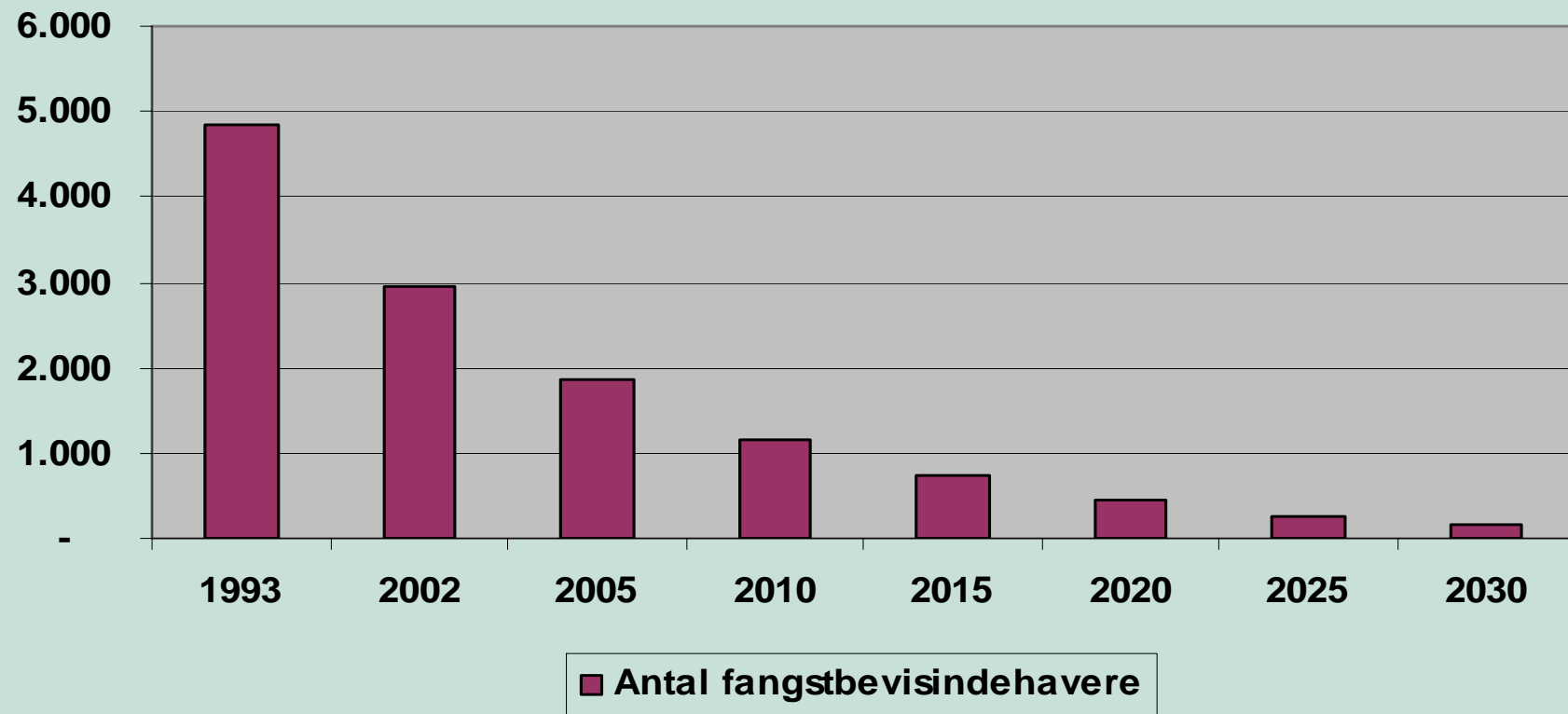
Households

Husstandsstruktur 2002



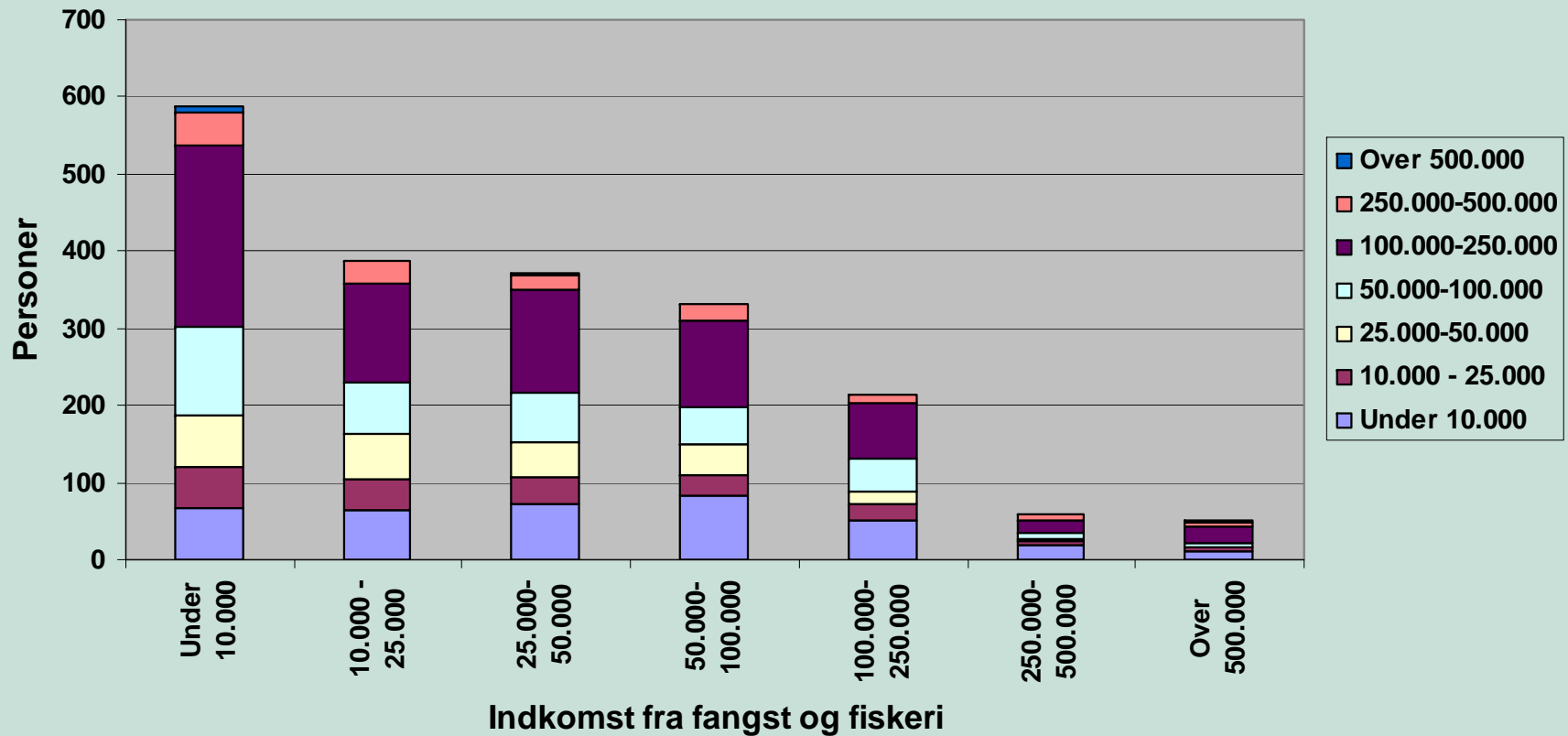
Future involvement?

Antal fangstbevisindehavere med de nuværende takt i fald



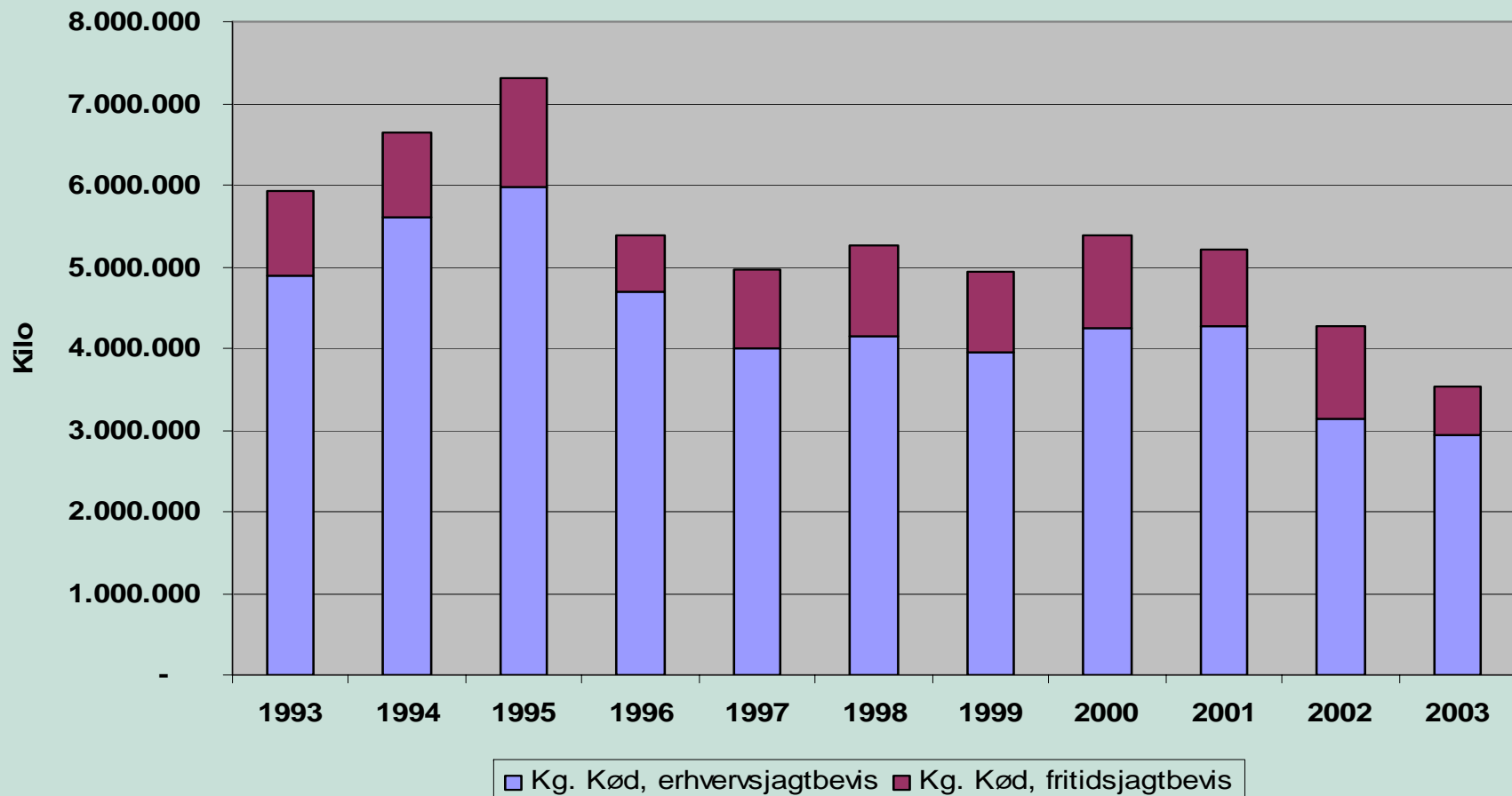
Income 2001

Indkomster indenfor og udenfor fangst og fiskeri. Personer med fangstbevis 2001



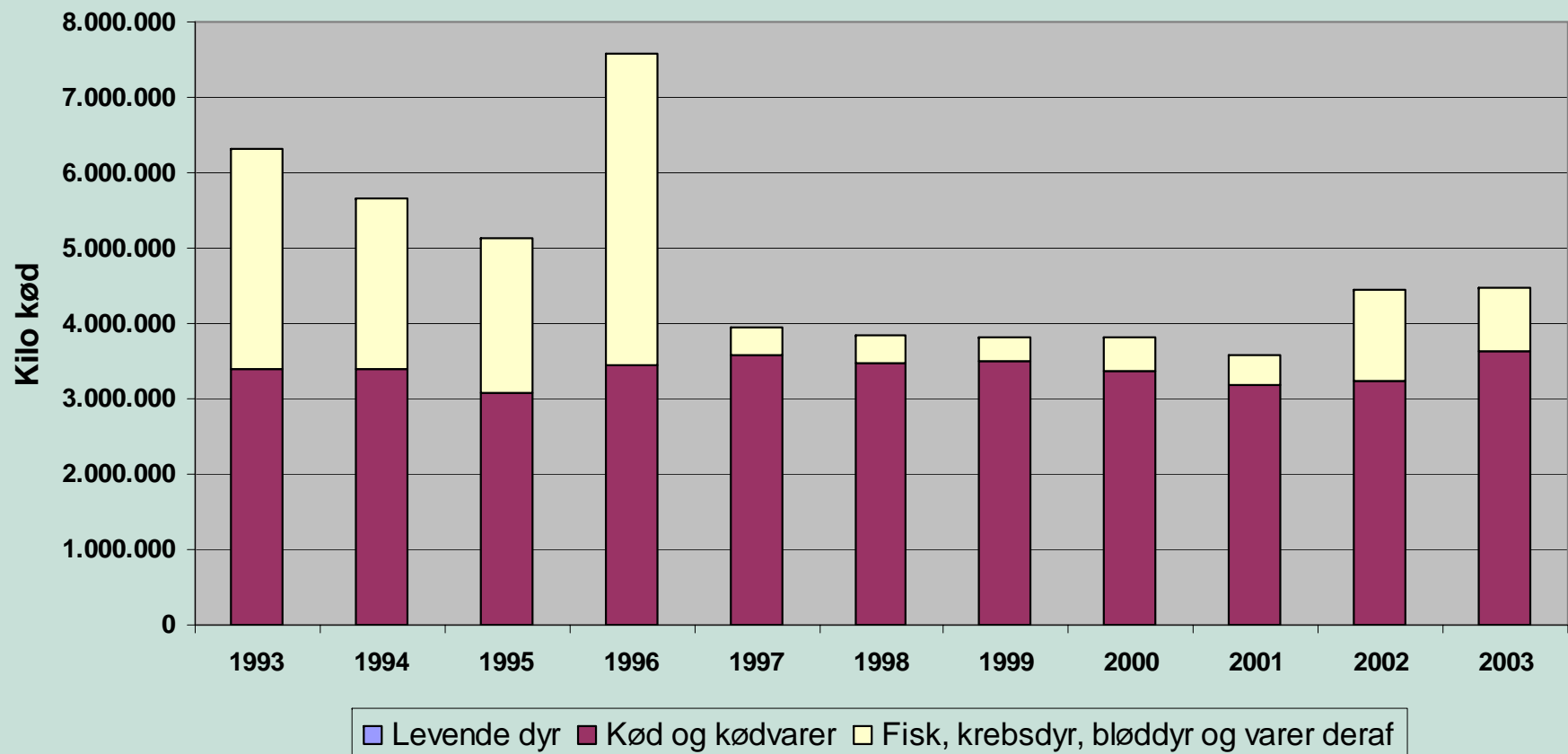
Meat supply

Samlet kødmængde fra fangst



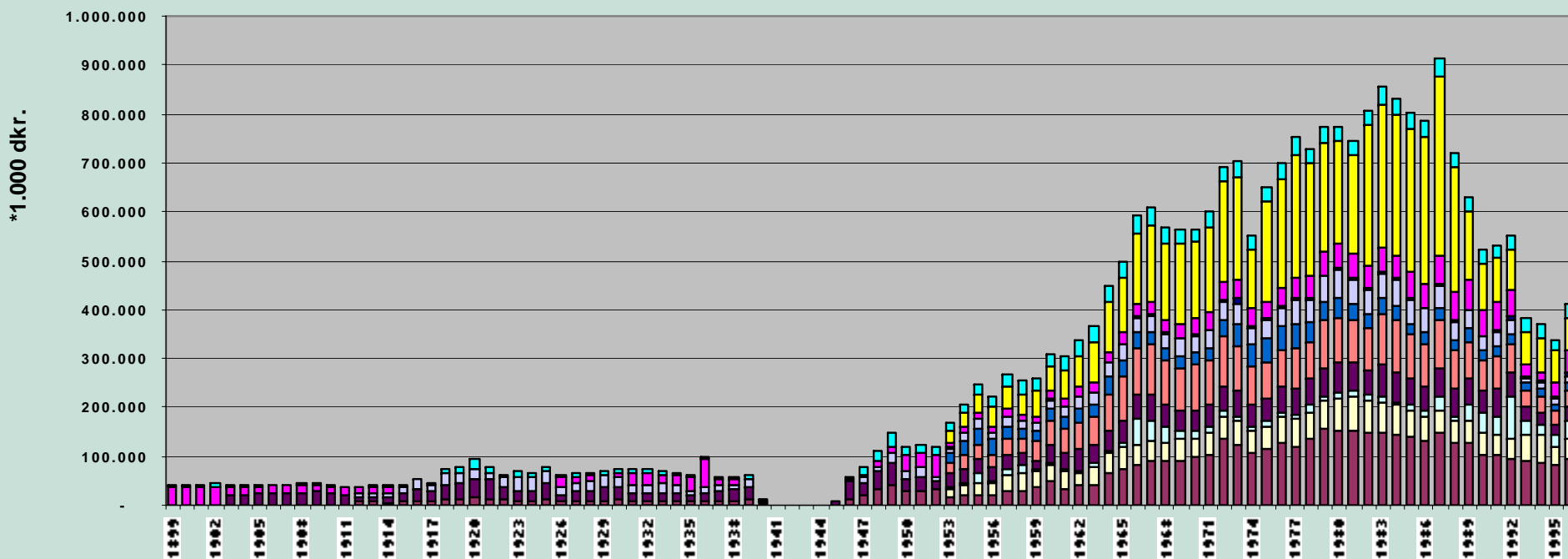
Import pattern

Grønlands kødimport



Import of food in Greenland

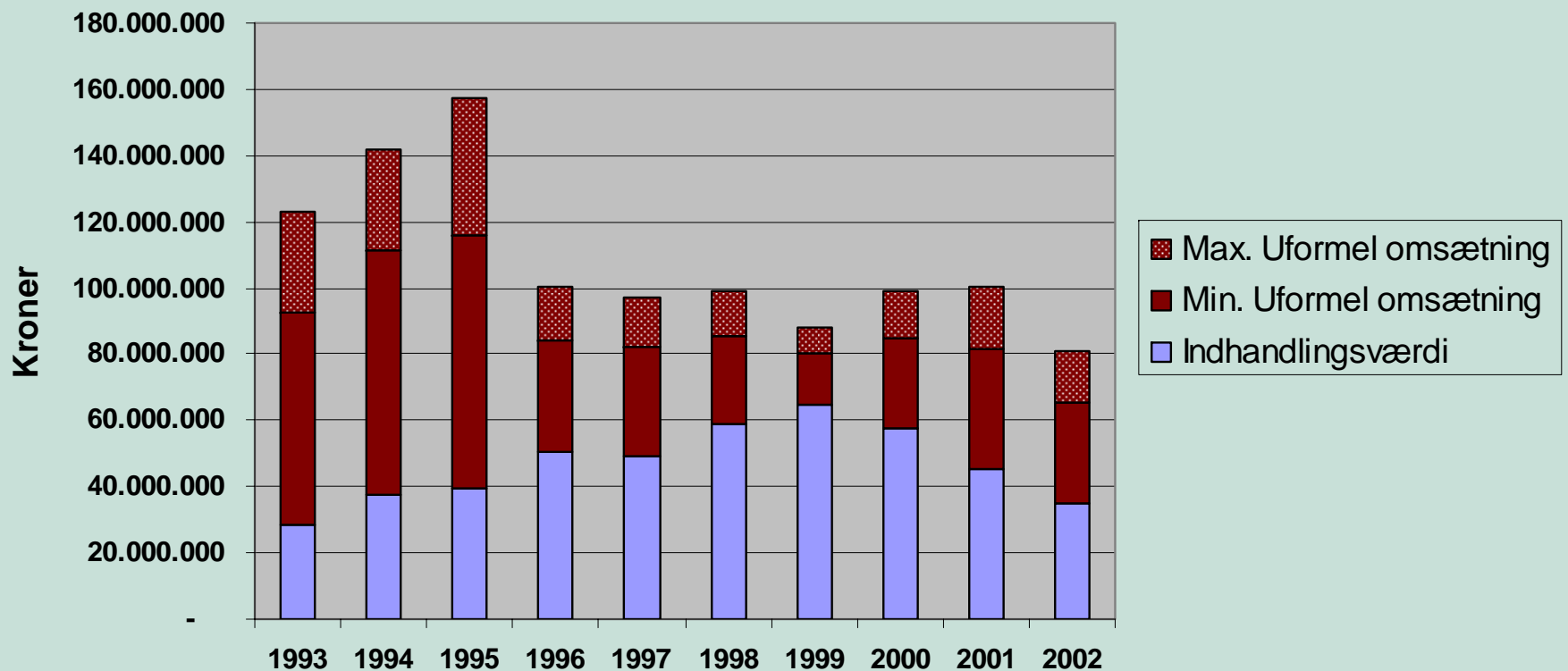
Greenland import of food



- | | | |
|---------------------------------|------------------------|------------------------------|
| Living animals | Meat and meat products | Dairy products and eggs |
| Fish and fish products | Cereals | Fruit and vegetables |
| Sugar, sugar products and honey | Coffee, tea etc. | Feedstuff |
| Other products | Beverages | Tobacco and tobacco products |

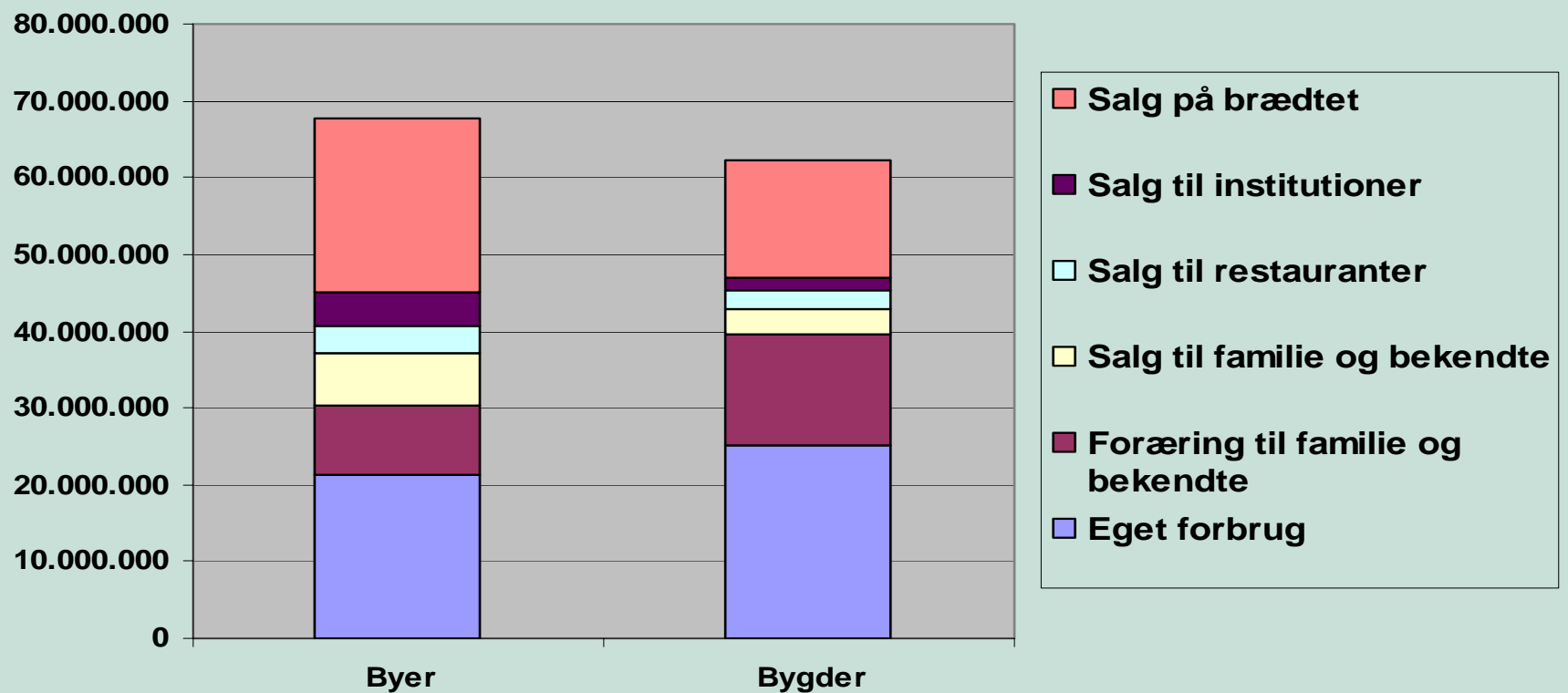
Formal/informal economy

Fordelingen mellem formel og uformel økonomi med variation i værdisættelse af den uformelle del



Informal economy in towns and villages

Fordeling af den informelle økonomi i byer og bygder



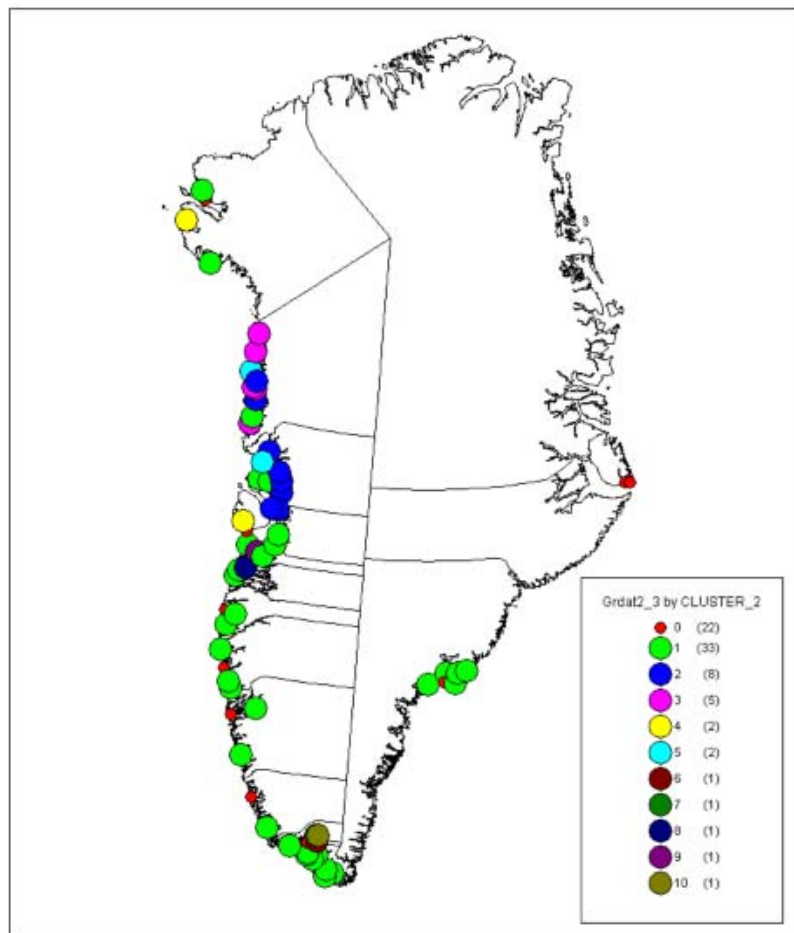
Poverty

- **USA**
 - **Enkeltpersoner: 11\$/dag ~ 27.000 kr/år**
 - **Familier: 14.000\$ ~ 100.000 kr/år**
- **EuroStat**
 - **Indkomster 60% under medianindkomst**
 - **Grl: Enkeltpersoner: 145.000 kr = 58.000 kr.**
 - **Grl: Ægtepar: 362.000 kr = 144.000 kr.**

Income levels

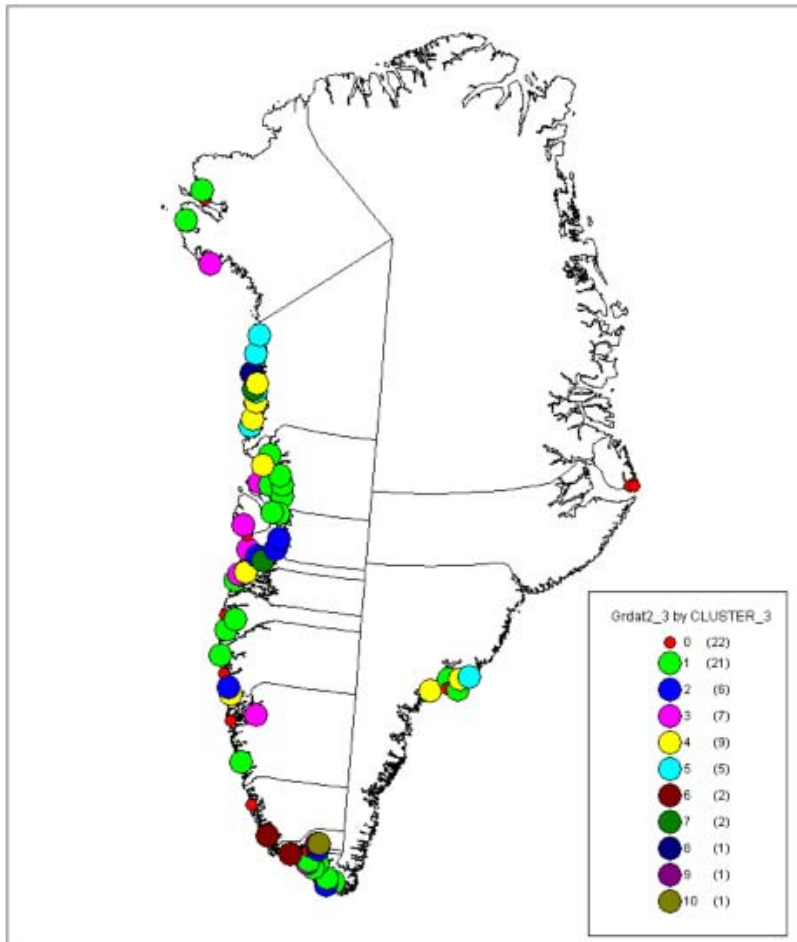
Tabel 8.1: Samlet indkomstfordeling
for personer med erhvervsjagtbevis 2001

Indkomstgruppe	Nord	Disko	Midt	Syd	Øst	I ALT
<10.000	4	3	5	1	5	18
10-25.000	33	9	7	8	14	71
25-50.000	83	28	20	14	25	170
50-100.000	181	87	42	25	38	373
100-250.000	308	268	155	94	63	888
250-500.000	102	131	101	34	17	385
>500.000	10	37	32	18	1	98
	721	563	362	194	163	2003



Similarities and differences in resource exploitation

Figur 9.4: Kort over grønlands bygder med ti klynger baseret på variabler indenfor kategorien økonomi. Klynge 0 omfatter byer og bygder som ikke indgår i analysen.



Figur 9.6: Kort over bygder samlet i 10 klynger på baggrund af variable med fokus på sociale forhold.

**Similarities
and
differences
in social
structures**

